



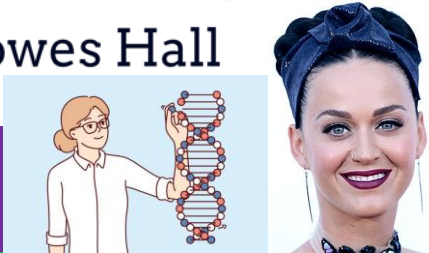
FRIDAY 12 DECEMBER 2025



# 'Ellow 'Ellow

## This week at Ellowes Hall

THEME OF NEXT WEEK: End of Year Rewards  
 ELLOWES HALL OF FAME FOCUS: Katy Perry / *Firework* by Katy Perry  
 CAREER OF THE WEEK: Geneticist



### Headteacher's Introduction

The run-up to Christmas is always an incredibly busy time for us in school. We always plan for a varied programme of events precisely because the festivities allow us to celebrate and enrich our sense of family and community.

This week, our Christmas Market brought warmth, colour and a real sense of togetherness to the heart of the school. It was a joy to see students, staff and families coming together to support the stalls, performances and activities, all of which reflected the generosity and creativity of our young people. The market was not only festive but purposeful, reminding us of the importance of giving, community spirit and shared experiences at this time of year. My thanks go to the staff and students who worked so hard behind the scenes to make the event such a success.

At its heart, the Christmas story reminds us of the triumph of light over darkness. The hope represented by a birth of a baby in Bethlehem is celebrated by the lights which ward off the seasonal gloom and darkness. In school these past couple of weeks, Year 11 mocks have brought with them occasional moments of challenge and despondency as students grapple with the intense demands of a gruelling exam timetable. You will not be surprised to hear that they have met these challenges with great distinction, showing calm resolve and an eagerness to hear from their teachers on how they have done. This bodes really well for the months ahead.

As we turn our attention to next week, there is a real sense of momentum across the school. We will be celebrating students' achievements through our rewards events, recognising not only academic success but also effort, resilience and positive contributions to school life. There will be also joyful moments of carols, Christmas dinner and, of course, our annual staff pantomime for all students on the

WEEK A
Monday 15 December
Tuesday 16 December
Year 7 Carol Service
Wednesday 17 December
Community Christmas Lunch
Thursday 18 December
Evening: Performing Arts Department Christmas Concert
Friday 19 December
Whole School Christmas Pantomime 12pm Finish for All Students

4,147 Positives This Week

**Year 7:** Ryan S  
**Year 8:** Ethan J and Lewis JP  
**Year 9:** Holli-Mae B  
**Year 10:** Alfie C  
**Year 11:** Amra A and Oscar G



If your child is a Student of the Week but we have not included their picture, it means we do not have the necessary consent from you. Please contact us if you would like us to be able to use your child's picture!



## Tutor Groups with the Best Attendance This Week...

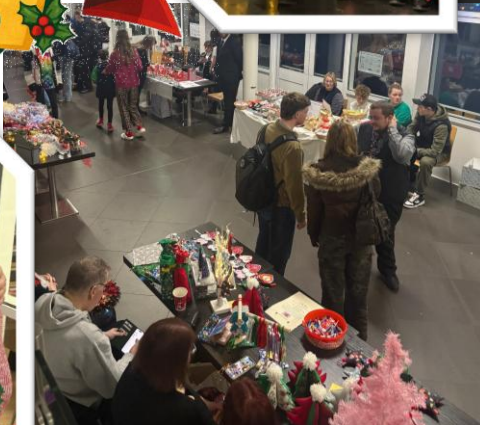
<b>YEAR 7</b>	7DH – Mr Hamilton	94.8%
<b>YEAR 8</b>	8EH – Ms Harvey	96.3%
<b>YEAR 9</b>	9PS – Mrs Stachan	94.6%
<b>YEAR 10</b>	10NKH – Ms Nightingale-Harris	98.3%
<b>YEAR 11</b>	11ASA – Ms Sabadas	98.6%



We are so proud of **Chloe** who has been busy crocheting two blankets for the neonatal unit at New Cross Hospital. Chloe and our Head of Design Mrs T Jones went and delivered them to the nurses who were so thankful and in awe of Chloe's talents! We have said we will make more over the year for them so hopefully see them again to donate more items for the babies!



And congratulations to **Chris** and **Ethan**, winners of our Grace Foundation After School Lego Club competition, pictured here with Lorraine who keeps our Ethos Room clean and tidy!







Thank you for your continued support for our Letters to Uganda project. Mrs Stobbart is continuing to collect sports equipment and unwanted mobile phones (which chargers) which are distributed in Uganda to support lifesaving medical care.

On Thursday, Mrs Stobbart will also be hosting a bake sale at Breaktime, all proceeds from which will go towards our Letters to Uganda Project. Students wishing to purchase are reminded to bring in any change on Thursday!



Last night they brought a tree home,  
They took it into the hall,  
Now why would they do a thing like that?  
I don't understand it at all.

Now they're hanging some tinsel upon it,  
Some coloured streamers and balls,  
And long loopy ribbons of twinkling lights,  
I don't understand it at all.

There's a red and green circle on the front door,  
And mistletoe on the wall,  
And the farmer's inspecting a red and white suit  
I don't understand it at all.

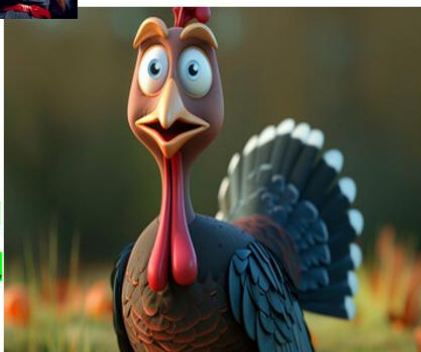
Out on the perch they're erecting  
What looks like a manger and stall,  
With a stuffed donkey, a baby, and three kings,  
I don't understand it at all.

Lately they've given me so much to eat,  
I'm almost as round as a ball,  
And now they are taking me up to the house,  
I don't understand it, at all.



## Baffled Turkey

By Valerie Bloom



## POETRY BY HEART

Choose a poem  
Learn it by heart  
Perform it out loud

### Explore The Poem!

The traditional activities associated with Christmas like decorating a tree, creating a nativity scene and putting a wreath on the front door are seen here through the eyes of a very puzzled turkey.

To perform this poem you get to be the baffled turkey. The poem starts with the arrival of the Christmas tree then each verse takes us a step closer to Christmas. Each step also takes the turkey closer to its inevitable end but the turkey doesn't know this! Try out different ways of speaking the poem to capture the build-up of tension.

This poem is fun to get your audience involved in. Before you perform the poem, get your audience to practise saying the line that is repeated at the end of each verse: "I don't understand it at all". Tell them they're going to say it five times and each time you want them to say it a little louder and a little more energetically.

Create a cue so they know when to say their line, for example, you could point to your audience or raise a hand.

Now go for it with everyone joining in!

## POETRY BY HEART

Choose a poem  
Learn it by heart  
Perform it out loud



for  
December is  
**Lola V**  
Year 7

POETRY





# Enrichment Activities – Autumn Term 2025 (Nov – Dec)

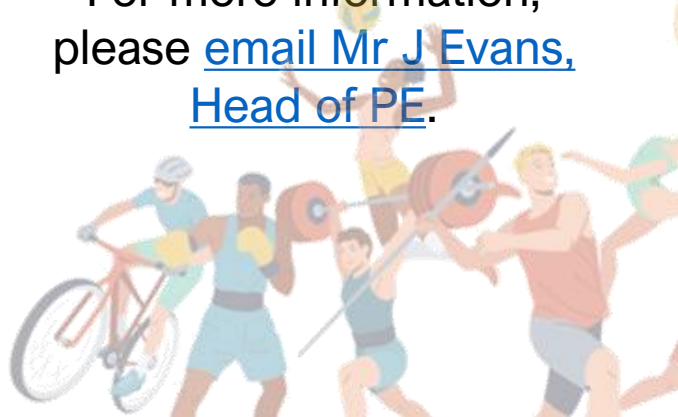


	Monday	Tuesday	Wednesday	Thursday	Friday
Before School	Breakfast in the Diner 8.00 – 8.40am				
11:15		Equality Ambassadors in E3 from 08:20 (BH)			
		Break Time Thrive Grace Foundation (ES)	Break Time Drop in Grace Foundation (ES)	Break Time Drop in Grace Foundation (ES)	
Lunch Time Clubs & Activities	The Library open to all every lunch time				
	Y7 Football in PE	Y11 Football in PE	Y10 Football in PE	Y8 Football in PE	Y9 Football in PE
	Choir in X1 (WJ)	Drama Scriptwriting Club in X4 (EH)	Drama Games Club in X4 (EH)	Beginners Guitar in X1 (WJ)	KS4 Dance Drop-in in X3 (RG) PE Kit Needed
	DT Club in D3 (DBA)	Christian Union / Drop in Grace Foundation (ES)	Drop in Grace Foundation (ES)	Equality Ambassadors & Space in E3 (BH)	Y7/8 Dance Club in X4 (EH) PE Kit Needed
	Textiles Club in D7 (TJ)	Digital Ambassadors in V3 (OM) KS3 programming club in V3 (DJ)	HAVE FUN	Nurture in SEND (MS/SW)	GET INVOLVED
	Enough - invite only (VR/MS) In Grace Foundation	Working Tuesdays (Careers and Health Ambassadors) in V6 (ATP/SR)		Drama Performance Club in X4 (EH)	
	KS4 Drama Rehearsal in X4 (EH)	Art Club in D5 (HHA)		Y7 Drop in Grace Foundation (ES)	
	Media Ambassadors in E8 (KRI)	Chess in S2 (DH)			
	Science Sparx HWK Club in V7 (DH)				
After School Clubs Activities	VOLUNTEER	Bright Sparx in V2 (PJ)	Lego Club 15:15 – 16:15 – Grace Foundation Rooms (VR)	Jujitsu 16.15 – 17:15 Sports Hall See Miss Harris due to a cost	Advanced Guitar Club 15:15 – 16:00 in X1
		Baking Club 15:15 – 16:15	Orchestra 15:15 – 16:00 in X1	Eco Ambassadors 15:15 – 16:15 in D4 (JMI)	KS4 Dance Drop-in in X3 (RG) PE Kit Needed
		Netball Y7 – 11 15:15 – 16:15 (JOP)	Basketball (Y7 – 10) 15:15 – 16:15 in Sports Hall	Badminton Y7 – 11 15:15 – 16:15 (RG)	
		Rugby Y7 – 11 15:15 – 16:15 (JEV)	Y9 Dance Club in X3 (RG)	Girls Football 7 – 11 15:15 – 16:15 (JW)	
		Musical Theatre Club in X4 (EH)	WELCOME TO SUCCESS ENJOY YOUR JOURNEY	Parallel Club 15:15 – 15:45 in M10 (AR)	
		Film Club 15:15 – 16:15 – Grace Foundation Rooms (ES)			

## PE EXTRA-CURRICULAR TIMETABLE

<b>Monday</b>  <b>BTEC Sport Intervention V4 (Year 10 Only)</b> 3E / RG / LM / 3W	<b>Tuesday</b>  <b>Netball (7-11) 3P</b>  <b>Rugby (7-11) 3E</b>
<b>Wednesday</b>  <b>Basketball (7-10)</b> <b>Black Country Basketball</b>	<b>Thursday</b>  <b>Badminton (7-11) RG</b>  <b>Girls Football (7-11) 3W</b> <b>BTEC Intervention (Year 11 Only)</b>
<b>Friday</b> <b>No Clubs!</b> 	<b>Notes</b> <b>Line up outside the Sports Hall</b> <b>Full PE Kit</b> <b>Fixtures take priority over training!</b>

Fancy trying a new sport? Why not be a part of one of our new partner clubs based here on school grounds. This opportunity isn't just for our students, put young people in the wider community also. For more information, please [email Mr J Evans, Head of PE.](#)



# Sparx

## Parent/Carer Guide

### How to log into Sparx to complete homework from home

Weekly homework will be set on the following days and then due on the same day the following week.

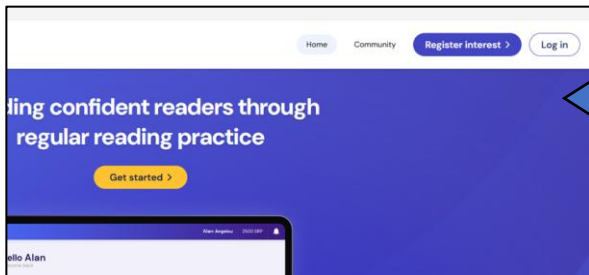
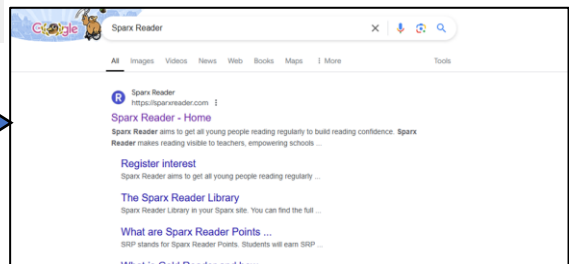
- Monday: Sparx Science
- Wednesday: Sparx Maths
- Thursday: Sparx Reader

Students can log into Sparx through either [the link on their Arbor page](#) or through a search engine such as Google.

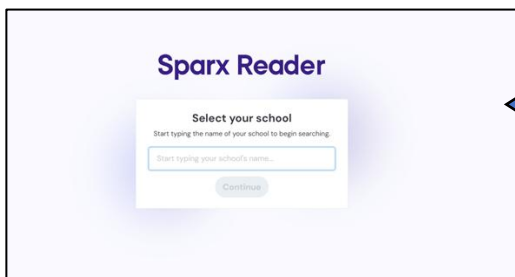


Subject	Homework set	Homework due in	Detention Night
Maths	Wednesday	Wednesday	Thursday
English	Thursday	Thursday	Friday
Science	Monday	Tuesday	Tuesday

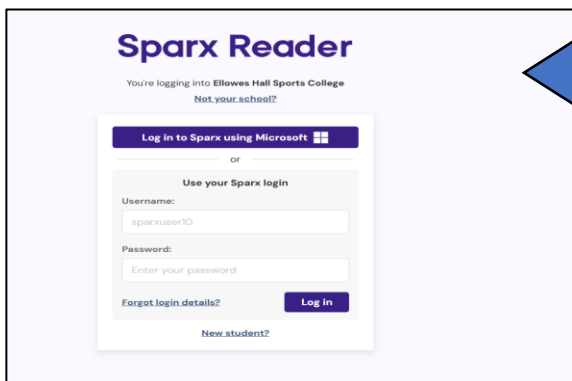
If accessing via Google, students will need to type Sparx Science/ Sparx Maths/ Sparx Reader into Google and select the first search result that appears.



Once they have clicked on either the link on Arbor or the search result on Google they need to click the white log in icon in the top right corner and then select student log in.



They will then be asked to select their school, which will appear as they start typing in Ellowes Hall Sports College



They can then click the purple box that says 'log in to Sparx using Microsoft' and then use their school email and password to log in. Their password is the same password that they use to log into any computer in school.

Any homework students have been set will appear. Students can continue to read on Sparx Reader even after their homework has been completed, and we would encourage them to, especially if they are really enjoying the book they have chosen.



## Carousel Homework for Geography and History

- One quiz per week per subject.
- Set and due Thursdays. Monday night detentions.
- Link set by Miss McCormack and Miss Perry to your email. Click this and login with your Microsoft email.
- You have to revise before you can take the quiz (say the answer to each flashcard aloud and then click 'show answer' to test yourself. Self-mark and then move on).
- Take the quiz and self-mark your answers. Be honest as your teacher can see!

### Y7 GEOGRAPHY WEEK 1

QUIZ BY MISS PERRY  
CLASS: YEAR 7 GEOGRAPHY

REVISE

TAKE QUIZ

Your teacher has locked the quiz.  
You must complete the flashcards before you can take this quiz.

Click REVISE to get started.



9 COMING UP!

Define 'political geography'

SHOW ANSWER

I GOT THIS...

WRONG

NEARLY  
RIGHT

RIGHT

# HOMework

**ELLOWS HALL  
KEY STAGE 3**

**LOVE TO LEARN**

**HOMework BOOKLET**

This booklet contains a range of tasks from each of your non-core subjects. You will need to use this as part of your homework. Please show your teacher on completion of a task for rewards.

Check in weeks 2025-2026  
Autumn term : w/c **8<sup>th</sup> December**  
Spring term: w/c **16<sup>th</sup> March**  
Summer term: w/c **22<sup>nd</sup> June**

**PE LOVE TO LEARN CHECK LIST**

Check in weeks 2025-2026

1. Complete a 20 minute workout	
2. Successfully complete 10 lunges	
3. Complete a 5 minute body weight circuit	
4. Attend a PE class for one half term	
5. Demonstrate a 100m sprint	
6. Attend a PE Trip this academic year	
7. Complete a 500m run in a sprint	
8. Watch any sports matches in the class	

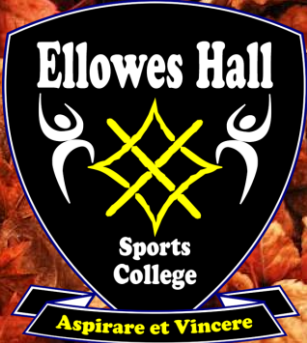
**REWARD CHALLENGE:**  
Watch a video on the importance of physical activity

**DRAMA LOVE TO LEARN CHALLENGES**

Check in weeks 2025-2026

Create a Poster of the Physical Skills and their definitions	
Design a costume for a new action movie	
Attend a Drama Club for a half term	
Get involved in a Performing Arts showcase (afternoon or weekend)	
Keep your own knowledge of Drama (Challenges) for your class	
Design a new set for your favourite TV show or film	
Design a challenge for your class	
Watch a general interest film and get a photo of a stage actor when a new character	

**KS3 Students (Years 7-9) have also been issued with Love to Learn Homework tasks. These will be checked at 3 checkpoints throughout the year, with effort scores shared with home. Prizes will be awarded for excellent participation!**



# Key Dates Autumn Term 2025

Date	Event
Thursday 18 September	15.30 – 17.00: Careers Convention, Wellbeing Café 17.00 – 17.30: Year 11 Parents' Information Evening
Friday 19 September	BTEC Sport Wolverhampton University Taster Day
Tuesday 23 September	Year 9 Walsall Art Gallery Trip
Wednesday 24 & Friday 26 September	Year 11 Geography Birmingham City Centre Fieldwork Trip
Thursday 25 September	13.30: Students dismissed for Open Evening preparation 16.00 – 19.00: <a href="#">Ellowes Hall Open Evening for Year 7 September 2026 Entry</a>
Friday 26 September	Macmillan Community Coffee Morning
Monday 29 September – Thurs 2 October	09.15 – 10.00: <a href="#">Open Mornings for Year 7 September 2026 Entry</a>
Monday 29 September – Thurs 2 October	KS4 Cornwall Art Trip
Tuesday 7 October – Friday 10 October	KS4 Poland Trip
Thursday 9 October	15.30 – 16.30: Year 7 Parents/Carers Form Tutor Drop-In Sessions
Thursday 16 October	Performing Arts Department Open Mic Night
Tuesday 21 October	Year 7 X Band Birmingham Think Tank Trip
Thursday 23 October	Year 7 Y Band Birmingham Think Tank Trip Halloween Disco
Friday 24 October	Flu Vaccinations (Year 11 & Catch-Ups)
Monday 27 – Friday 31 October	October Half Term
Monday 3 November	08.45: Student Return to School
Friday 7 November	Flu Vaccinations (Catch-Ups)
Wednesday 12 November	INSET Day (School Closed to All Students)
Wednesday 19 – Friday 21 November	Year 7 Whitemoor Lakes Trip
Thursday 27 November	15.30 – 18.30: Year 7 Parents' & Carers' Evening
Monday 1 – Friday 12 December	Year 11 Mock Exams
Thursday 4 December	Awards' Evening
Monday 8 December	KS3 Love to Learn Homework Check-In 1
Thursday 11 December	Birmingham Royal Ballet <i>Nutcracker</i> Trip
Thursday 11 December	Christmas Market
Friday 12 December	Christmas Jumper Day
Tuesday 16 December	Year 7 Christmas Carol Service
Wednesday 17 December	Community Christmas Lunch
Thursday 18 December	Performing Arts Department Christmas Concert
Friday 19 December	12.00PM: School Closes for Christmas Holiday



# WHAT'S ON GUIDE

## WINTER 2025



**Click the image above to find information about Dudley Borough Council's programme of Christmas activities and meals during the school holidays...**

## INTRODUCTION



HAF activities are running from **20<sup>th</sup> December 2025 to 3<sup>rd</sup> January 2026**

There is a huge range of fun activities and family events on offer, so take a look through this brochure to see what we have in store! Please also read the information below carefully for information on eligibility and the booking process.

### What is HAF?

Dudley Holiday Activities and Food (HAF) Programme is a government-funded programme offering free activities and meals during the school holidays, primarily for school-aged children from Reception to Year 11 (inclusive) who receive benefits related Free School Meals.

### The Booking Process

- Bookings open on **Monday 24<sup>th</sup> November 2025**
- You must be registered on the Dudley HAF website to be able to book activities. If you haven't already registered, please sign up on the [Dudley HAF Website](#).
- Once FSM status has been verified, you will receive an email with login details and a password for your account.
- If you are already registered, you do NOT need to register again - just log in to your account
- When bookings open, you can log in and book sessions for your children.
- For the winter holidays, each eligible child can book up to **4 fully funded places**.



# New Year BONFIRE

2<sup>nd</sup> January 2026

6pm Gates Open  
8pm Fireworks

May McMaster Memorial Ground, Swindon Road  
DY6 0AW - Parking at DK Rugby Club

Stalls, food, bonfire and fireworks  
\* Some stalls only take cash

£16.00 Family

£7.00 Adult

£4.00 Child Under 16

Raising money to send Explorers to  
Kandersteg, Switzerland in 2026!

More information at:

<https://www.dudleyscouts.org.uk/about-us/news#>

  
**Scouts**  
Dudley Explorers



Scan me for tickets!

