



FRIDAY 4 JULY 2025



'Ellow 'Ellow

This week at Ellowes Hall



THEME OF NEXT WEEK: Who are we at Ellowes Hall? Celebrating 2024-2025
ELLOWES HALL OF FAME FOCUS: The Who *Who Are You?* | Sir David Attenborough



Headteacher's Introduction

Around this time last year, we were delighted to hear that we had won an extremely prestigious competition – won by just ten other schools nationally – to stage Disney's *Frozen*. After a year of extremely hard work and incredible commitment by staff and students, we were all bowled over by the result – a powerfully-acted, choreographed and sensational performance. Its quality reflected something crucial to our culture and ethos – all young people have talents and it is our responsibility for us to provide and nurture those in the diverse places in which they spring up. *Frozen* was the culmination of the work of talented actors and singers, but equally reflected the time and effort of many unsung heroes behind stage, supporting with props and lighting.

Frozen's central message was also pertinent to us in school last week – the same stage which told the story of a young girl who learns to embrace her

distinct talents and harness them for the good of her community was also used to stage our Year 11 graduation on Wednesday morning. It was fantastic to see so many parents and carers and to hear directly from students who spoke so movingly and eloquently about what school had meant to them. Turnout to the Prom was the highest in a number of years, indicative of the joy this cohort of leavers drew from one another's company. We wish them well for the release of GCSE results in August.

We seek to sustain our values over successive generations of students and it was fitting that as we waved farewell to Year 11, other year groups moved onto important next chapters. Year 10 spent this week on Work Experience, gaining hugely important insights into the world of work as, at the other end of school, we welcomed our new Year 7 for two days of transition. With two weeks to go, I appreciate your continued support in driving attendance – there is lots to be enjoyed in school as a busy year draws to a close.

2,931 Positives This Week

STUDENT
OF THE
WEEK

Year 7: Alfie B
Year 8: Owen J
Year 9: Daniel C
Year 10: [Work Exp]



| Monday 7 July |
|---|
| 16.00 – 18.00: Student Art and Design Show |
| Tuesday 8 July |
| Year 9 & 10 Rewards' Visit to Alton Towers Year 7 Dance Assessment |
| Wednesday 9 July |
| Year 9 & 10 Graduations |
| Thursday 10 July |
| 15.30 – 18.00: Year 10 Parents' & Carers' Evening |
| Friday 11 July |
| |

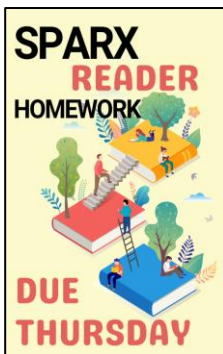
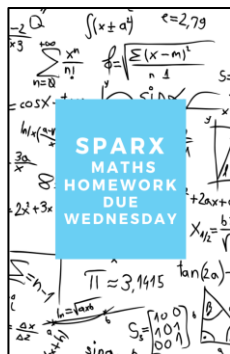
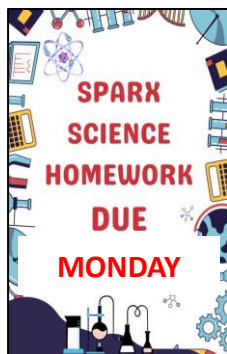
Tutor Groups with the Best Attendance This Week...

| | | |
|---------|------------------------|-------|
| YEAR 7 | 7JHO – Mr Horton | 94.8% |
| YEAR 8 | 8FS – Ms F Scott | 95.8% |
| YEAR 9 | 9GEV – Mr G Evans | 94% |
| YEAR 10 | <i>Work Experience</i> | |



| | Sparx Reader | Sparx Maths | Sparx Science |
|-------|--------------|-------------|--|
| YR 7 | Dakshdeep K | TBC | Sparx Science records scores slightly differently. |
| YR 8 | Oliver B | TBC | |
| YR 9 | Bailey E | TBC | |
| YR 10 | | TBC | |
| YR 11 | | | |

Don't forget... students needing support with their Sparx, or simply a place to go to complete it, can attend Mrs Tennant's Bright Sparx Club every Tuesday, Wednesday & Thursday mornings, 08:00-08:30, in V7 – or use V7 any weekday lunchtime to ensure they meet these deadlines.



Please help us to help you...!

Please be reminded that Absence Text Messages are sent out to parents/carers who have not notified us of a child's absence before 09.15. Kindly contact us before 09.15 on days of absence.

Art & Design Show

You are invited to
Ellowes Hall
Student Art and Design Show

When: Monday 7th July
At: 4pm-6pm
Where: School Reception and Theatre

Join us to celebrate creativity and experience work created by your child. Enjoy food and drink produced by our very own students.

Please email T.Jones@ellowes.dudley.sch.uk to register your attendance and how many visitors you intend to bring. Thank you and we look forward to welcoming you.





We said a fond farewell and celebrated the huge successes of our fantastic cohort of Year 11 Leavers this week, with a morning Graduation Ceremony – live broadcast for the first time to allow those unable to join in person to watch from home – followed by an evening of Prom celebrations...



The best time for new beginnings is now

- Unknown

Explore the Poem

As our year 11's celebrated Graduation this week, I thought this was an appropriate poem to share.

The path they now choose is the start of a new beginning - hopefully something wondrous and fulfilling.

But if there's one thing I've learnt, whatever path you choose, make it your own, believe in yourself and never remain stagnant. Take the rough, the smooth, the bumps, the potholes, the sleek and the slippery. Embrace every obstacle because every experience builds a better braver individual that can achieve without limits.

What If This Road (1997)
What if this road, that has held no surprises these many years, decided not to go home after all; what if it could turn left or right with no more ado than a kite-tail? What if its tarry skin were like a long, supple bolt of cloth, that is shaken and rolled out, and takes a new shape from the contours beneath? And if it chose to lay itself down in a new way, around a blind corner, across hills you must climb without knowing what's on the other side, who would not hanker to be going, at all risks? Who wants to know a story's end, or where a road will go?



Poetry

Word of the Week

The word 'contour' means the shape of something. In the case of the poem and our life journeys we can bend and mould the paths we take like the contours on a map.

About The Poet

Born in Birmingham, **Sheenagh Pugh** moved to Wales at a young age. She continued to live around Wales and the south-west of England for a number of years, including a period studying Russian and German at the University of Bristol.

Her poetry has been described as combining 'accessibility with profundity, clarity and sophistication' and it is particularly focused on human effort and struggle.

POETRY BY HEART

Choose a poem

Learn it by heart

Perform it out loud

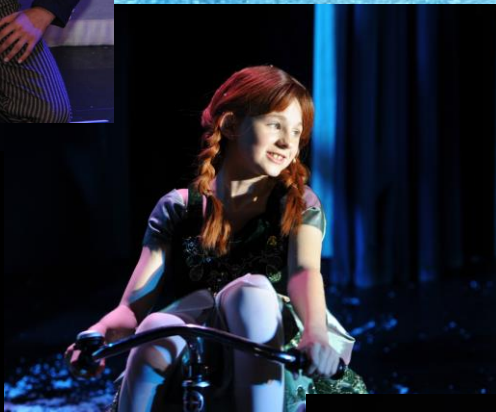


We're so proud of our cast and crew of another phenomenal production and pleased to share just a few emails...

I'm writing with gratitude for the extraordinary effort you and the other teachers poured into the *Frozen* production! Your dedication was nothing short of monumental, and it truly set the stage for something magical. Our daughter has blossomed with newfound confidence, absolutely thriving in the joy of this unforgettable experience, I'm sure it's left a profound mark on her heart. Watching so many students from all year groups dive in with passion, unite as a team, and forge beautiful friendships was nothing short of inspiring. The performance was a dazzling triumph, and I looking forward to re-living it through the recording. Thank you for creating such a remarkable moment for them.



What an amazing week watching the incredible cast of *Frozen*. It's hard to believe the age of the pupils who took part. They were all amazing. What a show!



We came to see the performance last night and I'd just like to say what an incredible show! All those students are a credit to you and the school and all those hours of practice certainly paid off.

Thank you for giving my daughter the opportunity to shine and come out of her shell, it was a pleasure to see.





In March 2026, we will celebrate the school's 60th anniversary, which we are determined to make a special community-focussed celebration of our key values and legacy. We would like as many former students/staff/anyone connected to our community over the last 60 years to be involved. [Please complete this form join to our 60th Anniversary Database](#), and share the link with any friends or family who may also want to be involved!

Black Country Careers Hub: Inspiring The Future

Students attended the Black Country Careers Hub, Inspiring the Future, careers fayre at Wolverhampton Racecourse. A wide range of employers made the event interactive and engaging, so students left with a plethora of information to help them in their career journey.



Black Country CAREERS HUB

Creating a brighter future for every young person in Dudley

Friday 27 June 2025

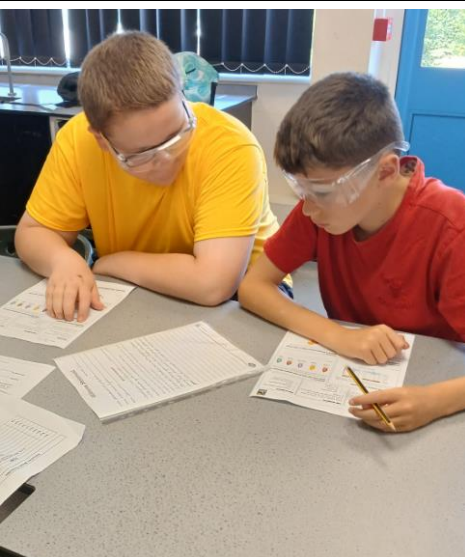


University of Wolverhampton



Exciting Sci Fest Trip to the University of Wolverhampton!

On Friday 27th June 2025, a group of our enthusiastic students had the fantastic opportunity to visit the University of Wolverhampton for their annual Sci Fest. The event was packed with interactive science exhibits, hands-on experiments, and engaging workshops led by university experts. Our students explored a variety of STEM fields, sparking curiosity and inspiration for future careers in science and technology. We are incredibly proud of our students for their participation and keen interest. Thank you to all staff and volunteers who made the trip possible!



We loved welcoming our incoming Year 7 into school for this week's Primary Transition Days. Students excelled across a packed couple of days, including in the specially-constructed Science Crime Scene! We look forward to welcoming them all in September...



Enrichment Activities – March 2025 Spring Term

| | Monday | Tuesday | Wednesday | Thursday | Friday |
|---------------------------------|---|--|---|---|--------------------------------------|
| | Breakfast in the Diner 8.00–8.40am | | | | |
| | Bright Sparx Club 08:00–08:30 in V7 (Not Friday) | | | | |
| | School Production every lunchtime (rehearsal of selected scenes, see the production rehearsal schedule) | | | | |
| Lunch Time Clubs & Activities | Y7 Football & Y11 Badminton in PE | Y11 Football & Y10 Badminton in PE | Y10 Football & Y9 Badminton in PE | Y8 Football & Y7 Badminton in PE | Y9 Football & Y8 Badminton in PE |
| | Keyboard Club in X1 (WJ) | Chess in S2 (DH) | Warhammer Club in D7 (CNS) KS3 Art Club in D2 (HHA) | Beginners Guitar in X1 (WJ) Dance in X3 (RG) | Choir in X1 (WJ) Dance in X3 (RG) |
| | Sparx in V7 (DH) | Thrive In Grace Foundation (ES) | Digital Ambassadors in V3 (OM) KS3 programming club in V3 (DJ) | Sparx in V5 (AT) | Sparx in V7 (AT) |
| | Enough - invite only (VR/MS) In Grace Foundation | History Film Club in D5 (JHo) | Working Wednesdays (Careers and Health Ambassadors) in V6 (ATP/SR) | Warhammer Club in D7 (CNS) | Sparx in V7 (AT) |
| | Attenborough Club in S3 (CKI) | | Drop in Grace Foundation (ES) | Equality Ambassadors & Space in E3 (BH) | |
| | School Production (rehearsal of selected scenes, see the production rehearsal schedule) 15:15 – 16:30 every day.. | | | | |
| After School Clubs & Activities | Tennis (invite only) 15:15 – 16:15 (JE) | Year 7 Science Club 15:15 – 16:00 in S5 | Lego Club 15:15 – 16:00 – Grace Foundation Rooms (VR) | Baking Club – All Years 15:15 – 16:00 | |
| | | Year 8 / 9 STEM Club 15:15 – 16:00 in S6 (RM) | Girls Gymnastics (all years) 15:15 – 16:15 in Sports Hall | Eco Ambassadors 15:15 – 16:15 in D4 (JMI) | |
| | | Parallel Club 15:15 – 15:45 in M10 (AR) | Y7 – 10 Martial Arts 15:15 – 16:15 (In Power Academy Coaches) | Guitar Club 15:15 – 16:00 in X1 | |
| | | KS3 DT Club 15:15 – 16:15 in D8 (DB) Warhammer Club 15:15 – 16:15 in D7 | | Y7 – 10 Touch Rugby 15:15 – 16:15 (JEV) | |
| | | Y7 – 10 Girls Netball 15:15 – 16:15 (JOP) | | Y7 – 10 Girls Football 15:15 – 16:15 (JW, RGR) | |
| | | Y7 – 10 Boys Football 15:15 – 16:15 (JEV, RGR, LM, IS) | | Y7 – 10 Basketball 15:15 – 16:15 (IS) | |

CAMBODIA

2027

EXCITING
OPPORTUNITY

We are excited to offer 12 current Year 7 and 8 students, a life-changing opportunity to explore 13 nights in Cambodia in July 2027!

We are partnering with World Challenge to offer this trip. It's an opportunity for learners to challenge themselves, step out of their comfort zone, whilst enjoying all the beauty this country has to offer.

Some of the activities include:

- Trekking through the Kulen Mountains
- Embracing a remote Elephant Conservation Project.
- Immersing in the culture and learn new skills.
- Discovering Angkor Wat

The cost of this trip is £4595. We appreciate that this is a lot of money, which is why we are launching the trip now. *"This is more than a traditional school residential - it is an opportunity to experience a brand new culture for an extended period of time and given the considerable cost involved, signing up also means committing to extensive fundraising over the next two years"*

World Challenge will also share ideas and resources on how a large amount of students have raised the full amount for the trip.

You will be invited along to a 45 minute virtual presentation by World Challenge. This will be held online on Tuesday 10th June @ 6pm to go through the itinerary and answer all your questions.

(The link to this presentation will be emailed to all parents of Y7 and 8 students closer to the date).



How to log into Sparx to complete homework from home

Weekly homework will be set on the following days and then due on the same day the following week.

- Tuesday: Sparx Science
- Wednesday: Sparx Maths
- Thursday: Sparx Reader

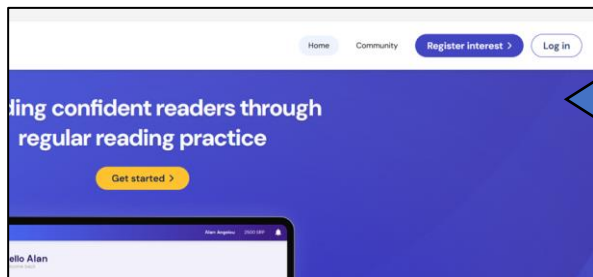
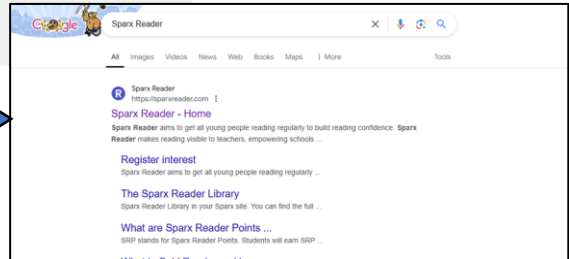
Students can log into Sparx through either [the link on their Arbor page](#) or through a search engine such as Google.

Sparx

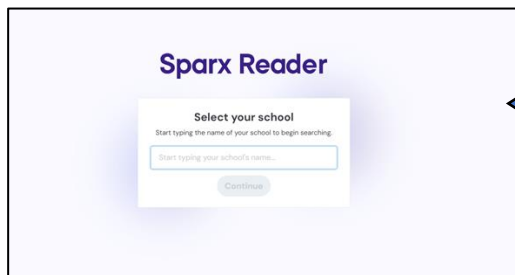
Parent/Carer Guide



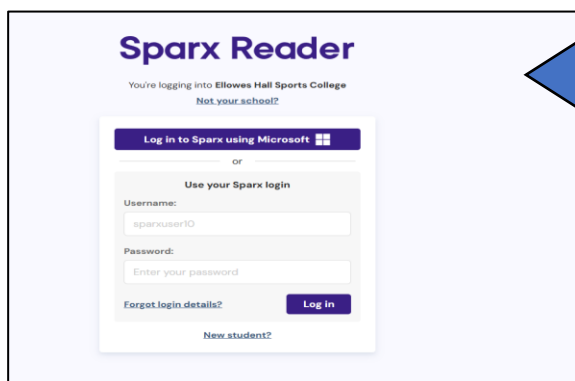
If accessing via Google, students will need to type Sparx Science/ Sparx Maths/ Sparx Reader into Google and select the first search result that appears.



Once they have clicked on either the link on Arbor or the search result on Google they need to click the white log in icon in the top right corner and then select student log in.



They will then be asked to select their school, which will appear as they start typing in Ellowes Hall Sports College



They can then click the purple box that says 'log in to Sparx using Microsoft' and then use their school email and password to log in. Their password is the same password that they use to log into any computer in school.

Any homework students have been set will appear. Students can continue to read on Sparx Reader even after their homework has been completed, and we would encourage them to, especially if they are really enjoying the book they have chosen.



Key Dates Summer Term 2025

| Date | Event |
|---------------------------------|---|
| Monday 28 – Wednesday 30 April | Year 10 Silver Duke of Edinburgh Expedition |
| Thursday 1 May | Junior UKMT Challenge |
| Thursday 1 May, 15.30 – 18.30 | Year 9 Parents' & Carers' Meeting |
| Thursday 1 May | Year 11 Dance Showcase |
| Friday 2 May | Year 8 HPV Vaccine |
| Monday 5 May | May Bank Holiday – School Closed |
| Wednesday 7 May, 18.00 – 18.45 | Ellowes VE Day80 Memorial Garden Opening Ceremony |
| Monday 12 May | Year 8 Walk The Length of the UK Challenge |
| Friday 16 May | Year 10 Triathlon Challenge |
| Monday 2 – Friday 6 June | Year 7 KS3 Major Milestone Assessment Week |
| Monday 2 & Tuesday 3 June | Year 10 GCSE History Globe Theatre Visit |
| Monday 9 – Wednesday 11 June | Year 10 GCSE English Speaking & Listening Exams |
| Monday 9 June | Year 7 Twycross Zoo Rewards' Visit |
| Wednesday 11 June | Year 8 HPV Catch-Up Vaccine |
| Thursday 12 – Friday 20 June | Year 10 Exam Week |
| Wednesday 18 June | Year 7 Science Big Bang NEC Visit |
| Thursday 19 June | Year 8 Rewards' Visit |
| Friday 20 June | Lakeside PE Trip |
| Friday 20 June, 16.30 – 19.30 | 10 Years of Invictus Summer Celebration at Kinver High School |
| Monday 23 – Friday 27 June | New York Visit |
| Friday 27 June | Year 9 Wolverhampton University SciFest Visit |
| Monday 30 June – Friday 4 July | Year 10 Work Experience Week |
| Monday 30 June & Tuesday 1 July | Primary Transition Days |
| Wednesday 2 July | 09.00 – 10.30 Year 11 Graduation Ceremony (in school) 18.00 – 23.00: Year 11 Prom, Grand Station Hotel Wolverhampton |
| Monday 30 June – Friday 4 July | <i>Frozen</i> School Production |
| Thursday 3 July – Friday 4 July | KS3 Eden Project Visit |
| Friday 4 July | Sports' Day at The Dell Stadium, Brierly Hill |
| Thursday 8 July | Year 10 Rewards' Visit |
| Thursday 10 July | Year 9 Rewards' Visit |
| Thursday 10 July, 15.30 – 18.30 | Year 10 Parents' & Carers' Meeting |
| Friday 18 July | Term Finishes At 12pm |



Unheard Voices

SEND carers support group

WE ARE A SEND SUPPORT GROUP RUN BY PARENTS TO HELP OTHER PARENTS AND CARERS. THE SUPPORT GROUP WILL BE A SAFE SPACE WHERE YOU CAN COME FOR A CUPPA AND HAVE A TALK, RANT, ASK FOR HELP OR EVEN CRY IF YOU WANT TO. COME ALONG TO OUR FRIENDLY CARERS SUPPORT GROUP.



FRIDAY 10:30 - 12:00
JUBILEE HALL, LADIES WALK, SEDGLEY,
DUDLEY DY9 3UA

FOR MORE INFORMATION CONTACT EMAIL
UNHEARDVOICES13@YAHOO.COM

Dudley

Search...

ME Today

In My Area

News

Cost of Living

Media Centre

eNewsletter

Service status

Residents

Business

Things to do

Council & Community

Residents > Care and Health > Summer Wellbeing

Summer Wellbeing

The summer heat can affect us all. Some people are more at risk of harm from high temperatures and need to be careful. These include older people, especially those over 75, people who live on their own, those with a pre-existing health condition, babies and young children, and people who spend a lot of time outside or in hot places. Here you can find information, advice, help and support on keeping safe and well in summer.

Stay cool and hydrated

Advice on drinking enough water and keeping your home cool

> [Stay cool and hydrated](#)

Stay sun safe

Advice on how to look after your skin during the summer months

> [Stay sun safe](#)

Heat exhaustion and heatstroke

What are the signs of heat exhaustion and heatstroke and what can you do?

> [Heat exhaustion and heatstroke](#)

Swimming outdoors

If you choose to swim outdoors, always stay safe and never leave children unaccompanied

> [Swimming outdoors](#)

Fire safety

Food safety

Looking after yourself and others

Top tips and resources

Please click here for Summer Wellbeing tips from Dudley MBC

Water Bottles During Warm Weather

During the warmer months, we would appreciate your support in ensuring students bring water bottles to school. We are attempting to reduce the amount of wasted plastic for environmental reasons, and are currently going through an extremely high number of disposable cups. Please support our efforts to ensure your young people are kept hydrated during hot weather by sending them into school with a water bottle.



Ellowes Hall Book Bank



THANK YOU SO MUCH

We have been inundated with donations for our rejuvenated School Library! A huge thank you from Mrs P Jones to so many parents and carers for their generosity.

Thank you so much!

Does your school library need books? You could win £1,000 of National Book Tokens to fill your shelves with new books, plus £300 to improve the library space and encourage reading for pleasure for years to come.

[View in browser](#)

NATIONAL BOOK tokens
A gift beyond words

WIN £1,000

FOR YOUR SCHOOL'S LIBRARY

In association with
Read for Good

Your school needs you!

Our big schools prize has returned this summer, in association with our longstanding charity partner, Read for Good.

We're offering five schools the chance to win **£1,000 in National Book Tokens** and fill their shelves with new books, as well as **£300 in cash** to create a fun and welcoming library space for all!



Some of our Year 9 and 10 dancers had the fantastic opportunity to work with visiting Dance Company Flexus last week. The workshop led by Katy Steran was inspiration as she gave our pupils an insight into the discipline and creativity needed to work in the Dance Industry. I am very proud of how our dancers rose to the challenge and showed resilience throughout the day. Great work, dancers!



Jujutsu Self-Defence Classes

Beginning September 11th 2025



When: Every Thursday at 4.15pm

Where: Ellowes Sports Hall

For who: Years 7-11

How much: £7 per class (first class is free)

JUJUTSU

- Fully qualified and experienced coaches
- Comprehensive and structured syllabus with guided personal development
- Traditional formal roots to develop discipline and respect
- Builds self defence and resilience
- All the best elements of martial arts combined.



Learn the enriching martial art of Jujutsu with:
Taijutsu Kai Schools of Jujutsu

Contact : Hharris@ellowes.Dudley.sch.uk if you require a consent form for your child or further information.